

Protected Resources and Biodiversity Division

So. Florida Ecosystem Team

Florida Bay Group
Biscayne Bay Group
St. Lucie Group
Ten Thousand Islands Group

Sea Turtle Team

Population Assessments
Strandings

Early Life History Team

Marine Mammal Team

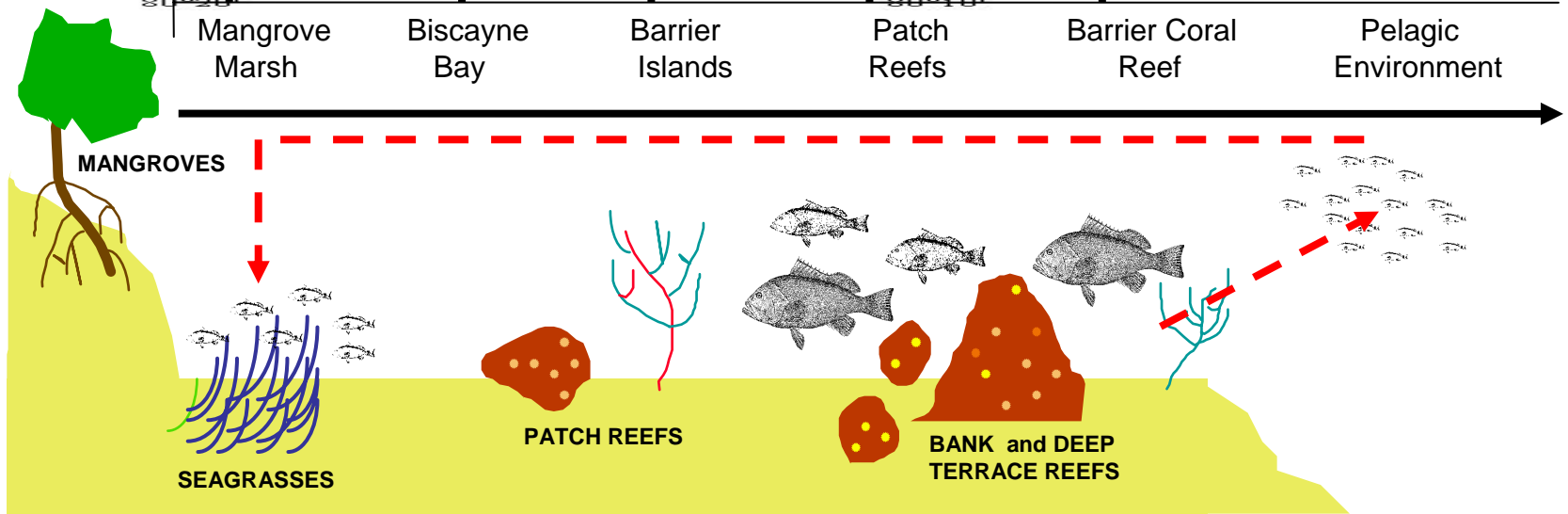
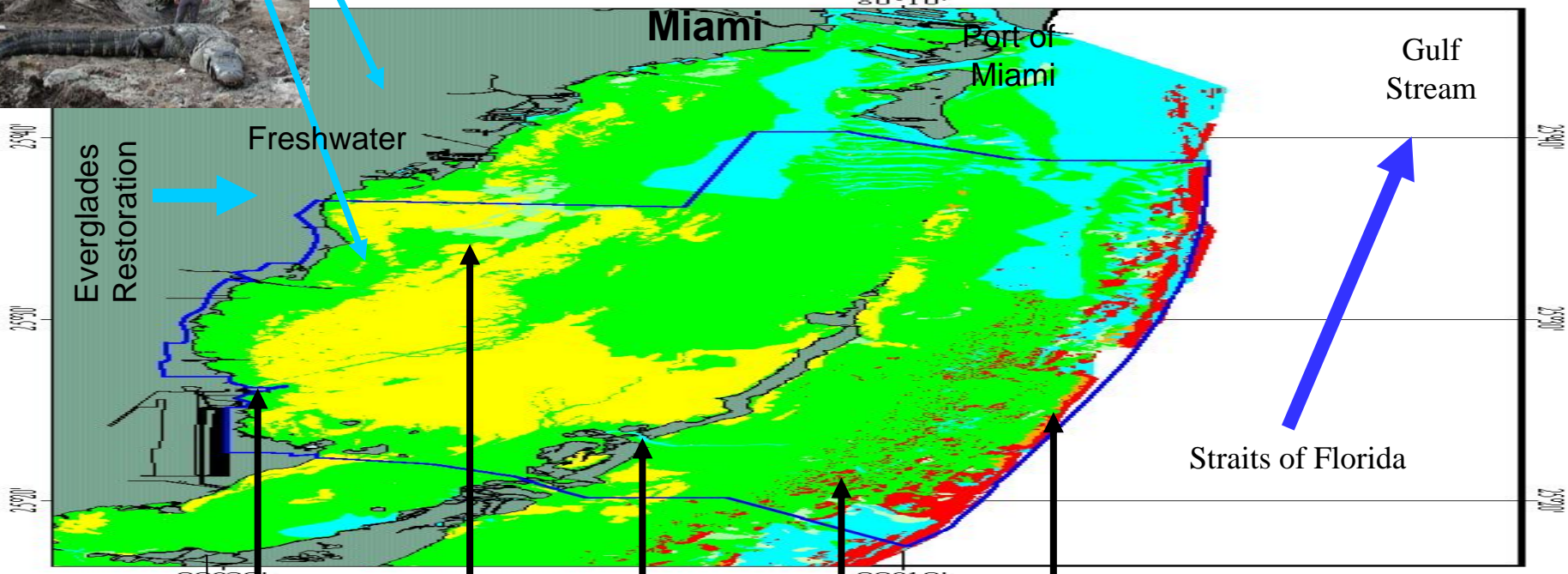
Population Assessments
Strandings

Coral Reef Investigations Unit

Coral / Benthos Team

Fishery-Independent Assessment Team

Coastal Bays to Coral Reefs Biophysical Dynamics



Mangrove Marsh Biscayne Bay Barrier Islands Patch Reefs Barrier Coral Reef Pelagic Environment

Protected Resources
Research and Mgmt Services
Conservation and Management Programs

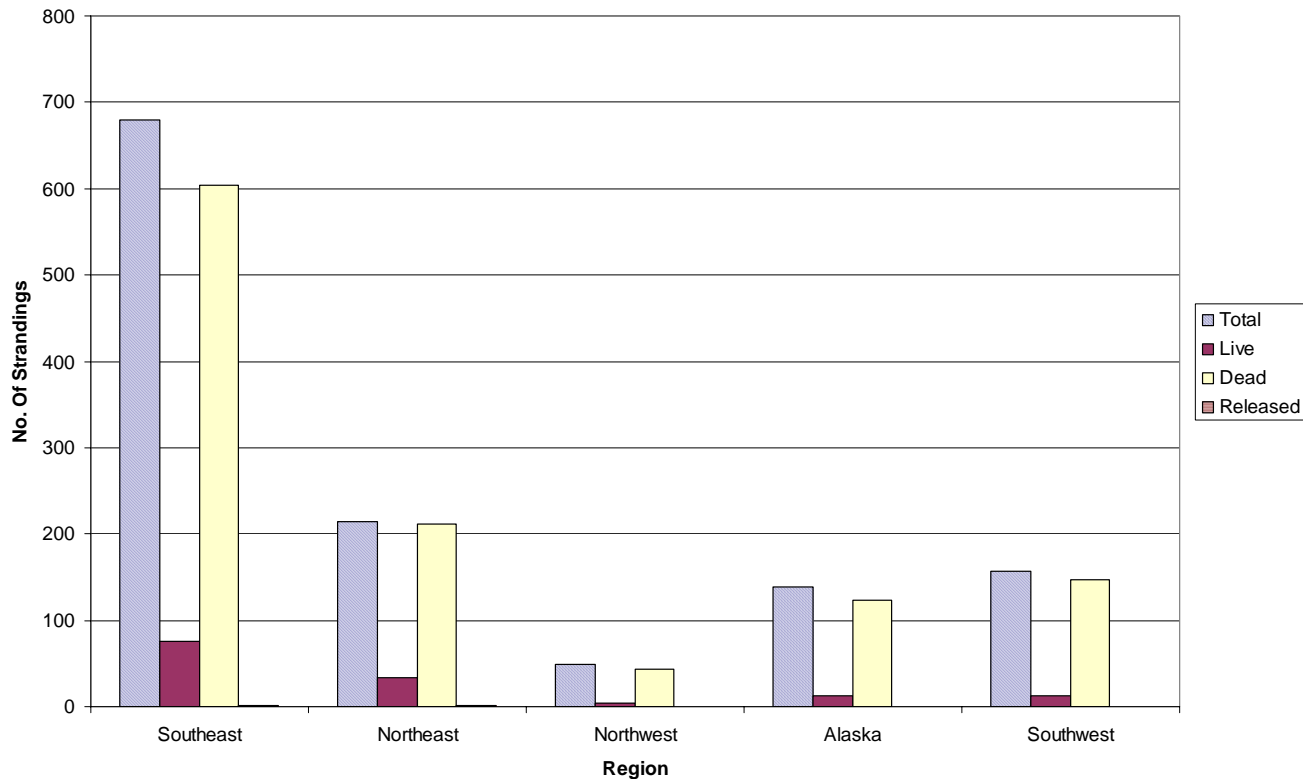
- Stranding Network
Coordination
 - Coordinates and implements regional networks for stranded marine mammals and sea turtles with universities, state agencies, and private organizations



Marine Mammal Health and Stranding Response Program

Components (NEPA Review)

Total Cetacean Strandings By Region 2000



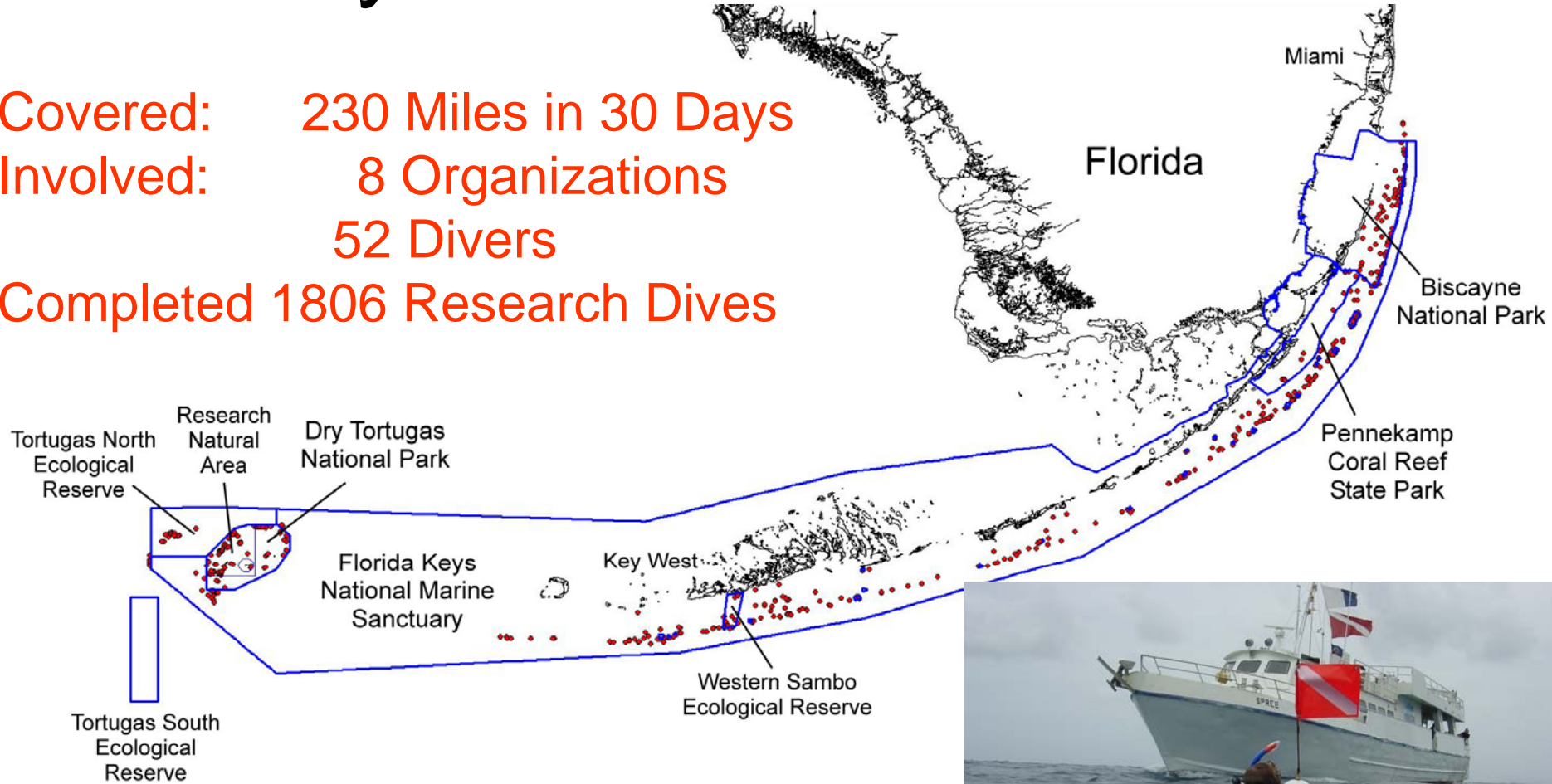
Habitat Conservation Research and Mgmt Services *Sustainable Habitat Management Programs*

- Habitat Science/Research Programs
 - Conduct studies to determine effects of fishing on benthic habitat in US waters
 - Support habitat research including ecosystem restoration program evaluations



Keys Wide Cruise 2002

Covered: 230 Miles in 30 Days
Involved: 8 Organizations
52 Divers
Completed 1806 Research Dives





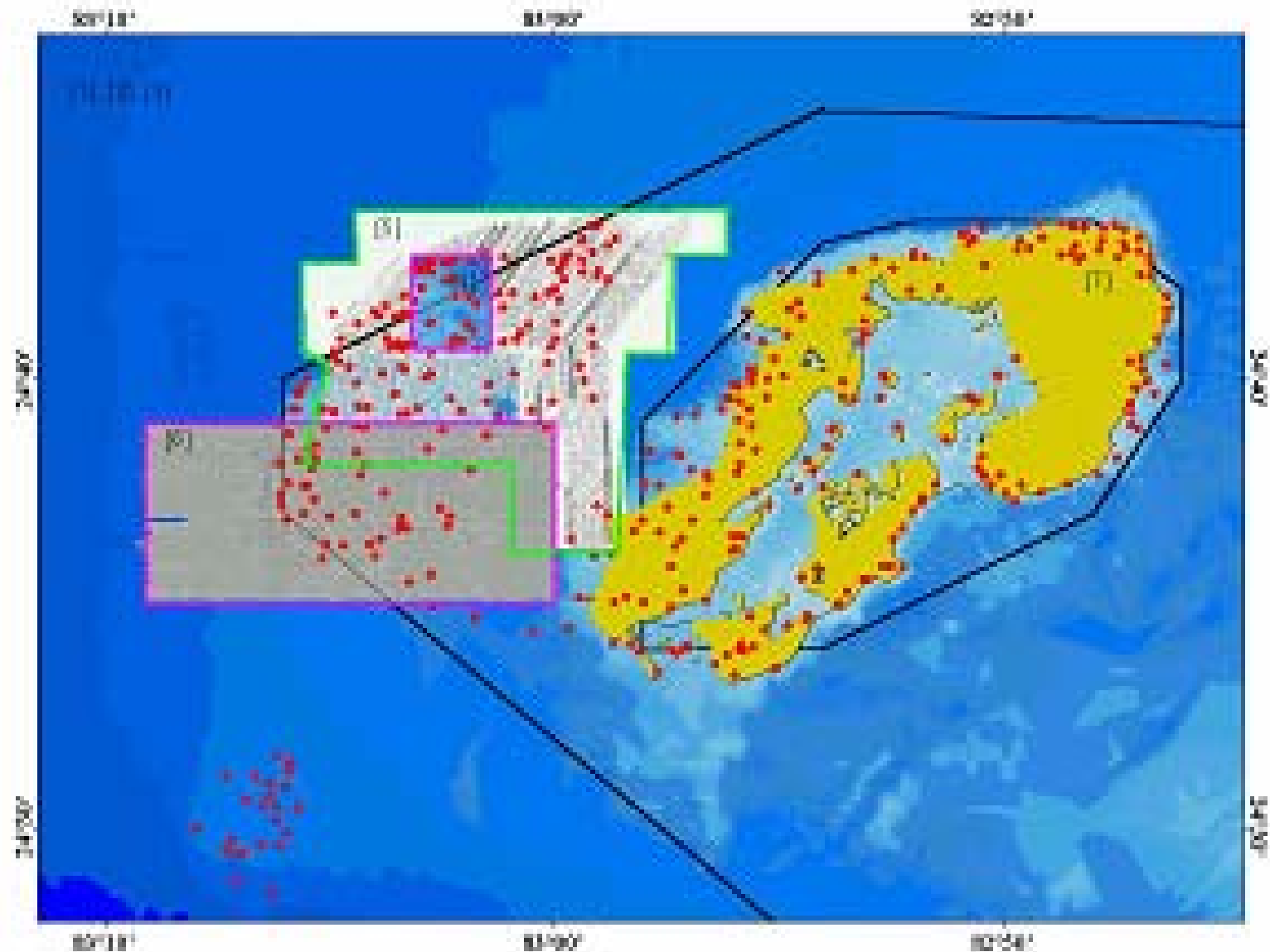
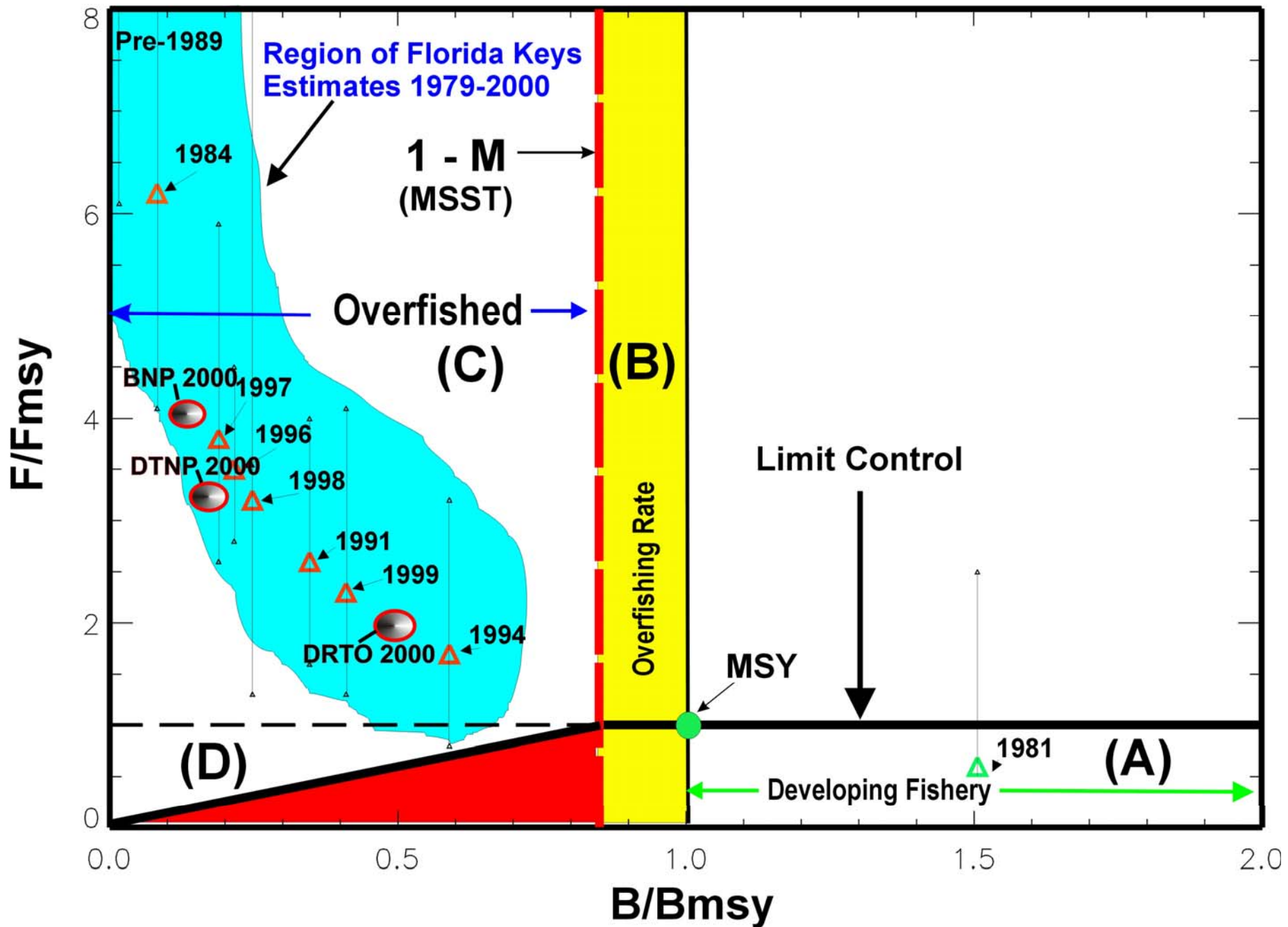
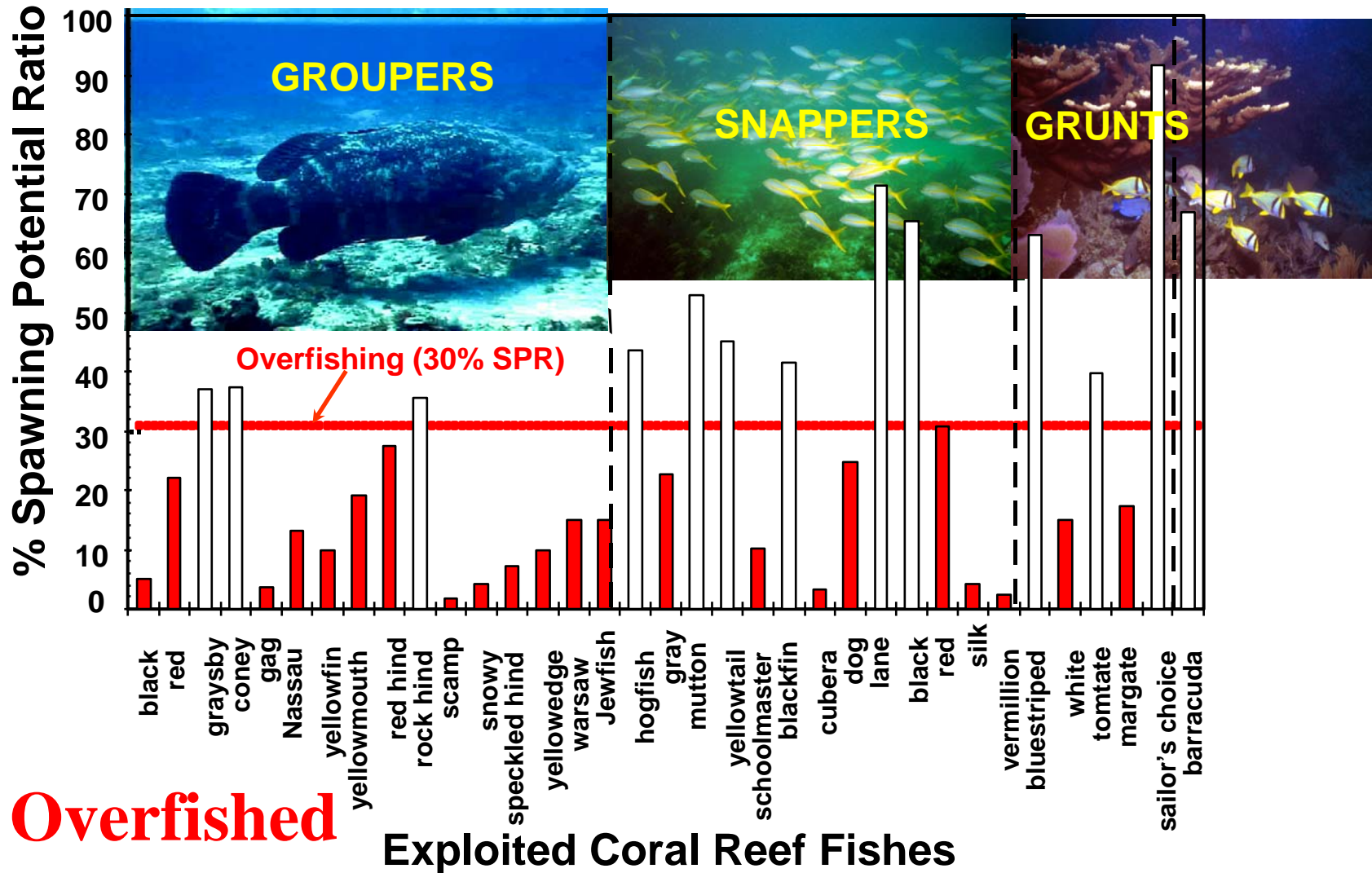


Figure 2.2 - Contoural depiction of georeferenced data sources used to characterize marine habitats in the Tortuga region. See text for further explanation.

Black Grouper

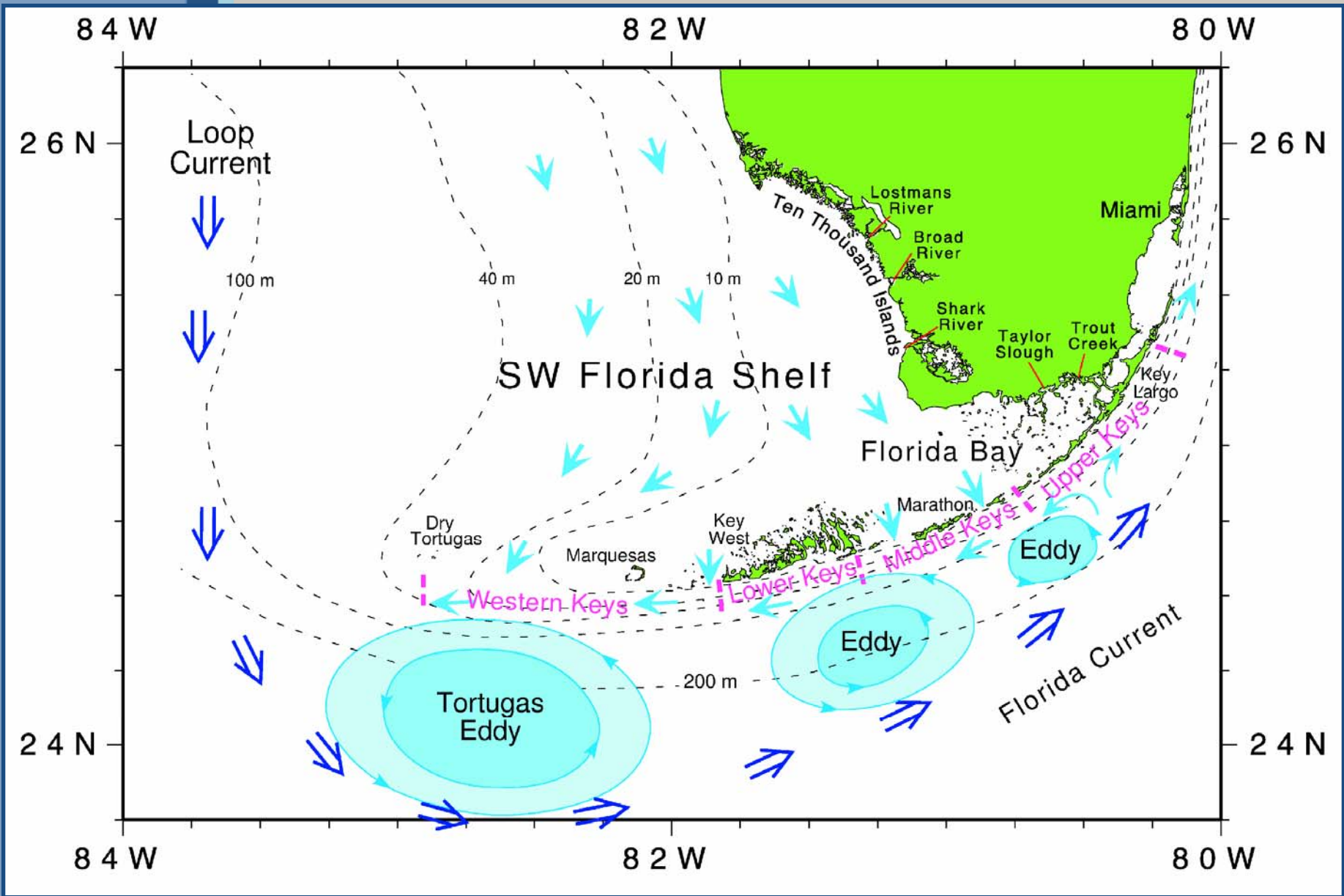


Florida Keys 2000

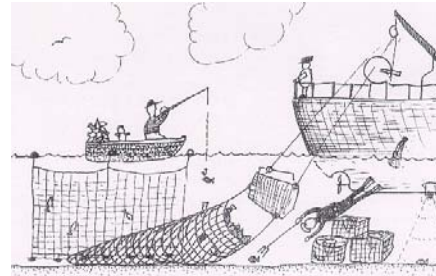


88% (206 species) are unknown

Ault et al. 1997. 2nd World Fisheries Congress
Ault et al. 1998. Fishery Bulletin



Marine Ecosystem Model

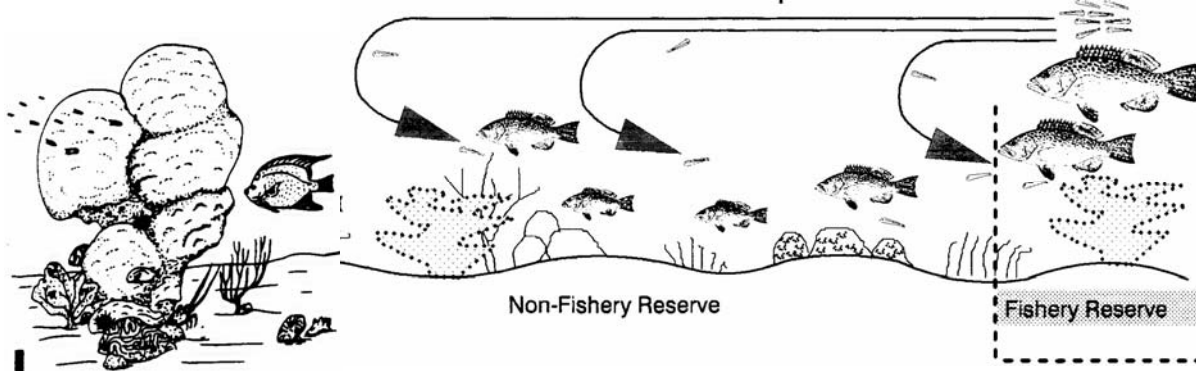


Ecosystem **Goods & Services**

Human Dimension



Ecosystem **Structure & Function**



Biotic Dimension

Physical Dimension

(Geology, Oceanography, Climate)

- **Impacts**
+ Restoration



